

## \$459,900 - 4142 6a Street, Edmonton

MLS® #E4435813

**\$459,900**

3 Bedroom, 2.50 Bathroom, 1,375 sqft

Single Family on 0.00 Acres

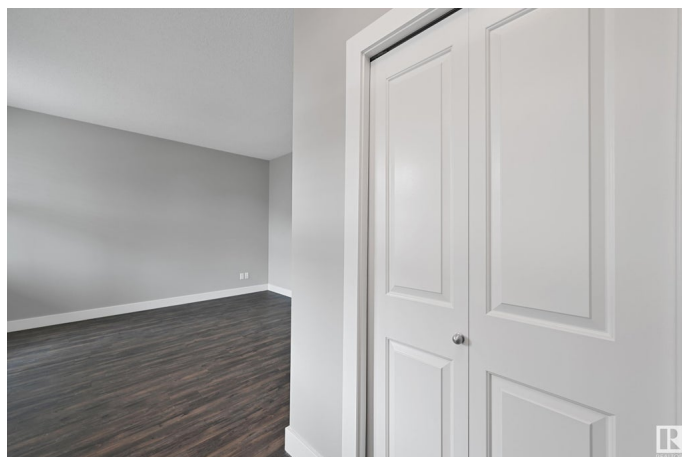
Maple Crest, Edmonton, AB

Welcome home to your new home in Maple Crest. This 1375 sq ft, Homes by Avi built, two storey shows very well. Home has been freshly painted throughout. 3 bedrooms, 2.5 baths, stainless steel appliances, engineered hardwood flooring, granite counters, A/C and much more. The unfinished basement is ready for your personal touches. Fully landscaped, west facing yard, with a large deck for entertaining, and a 21x21' garage out back. Great location, close to schools, shopping, the Henday and the Whitemud. This home will not last long, a must see!

Built in 2014

### Essential Information

MLS® #	E4435813
Price	\$459,900
Bedrooms	3
Bathrooms	2.50
Full Baths	2
Half Baths	1
Square Footage	1,375
Acres	0.00
Year Built	2014
Type	Single Family
Sub-Type	Detached Single Family
Style	2 Storey



Status	Active
--------	--------

## Community Information

Address	4142 6a Street
Area	Edmonton
Subdivision	Maple Crest
City	Edmonton
County	ALBERTA
Province	AB
Postal Code	T6T 0T6

## Amenities

Amenities	Air Conditioner, Deck
Parking Spaces	2
Parking	Double Garage Detached

## Interior

Interior Features	ensuite bathroom
Appliances	Air Conditioning-Central, Dishwasher-Built-In, Dryer, Garage Control, Microwave Hood Fan, Refrigerator, Stove-Electric, Washer, Window Coverings
Heating	Forced Air-1, Natural Gas
Stories	2
Has Basement	Yes
Basement	Full, Unfinished

## Exterior

Exterior	Wood, Vinyl
Exterior Features	Fenced, Landscaped, Playground Nearby, Public Transportation, Schools, Shopping Nearby
Roof	Asphalt Shingles
Construction	Wood, Vinyl
Foundation	Concrete Perimeter

## Additional Information

Date Listed	May 10th, 2025
Days on Market	10
Zoning	Zone 30

DATA IS DEEMED RELIABLE BUT IS NOT GUARANTEED ACCURATE BY THE REALTORS® ASSOCIATION OF EDMONTON. COPYRIGHT 2025 BY THE REALTORS® ASSOCIATION OF EDMONTON. ALL RIGHTS

RESERVED.Trademarks are owned or controlled by the Canadian Real Estate Association (CREA) and identify real estate professionals who are members of CREA (REALTOR®, REALTORS®) and/or the quality of services they provide (MLS®, Multiple Listing Service®)

Listing information last updated on May 20th, 2025 at 5:32am MDT